

BINKS MAGIC-FLOW 2

Universal Electronic Mixing Solution

Magic-Flow 2 is a versatile and flexible mixing solution designed to accommodate many low pressure or high pressure applications. It supports a range of optional, functionality-enhancing modules to provide 2, 3 or 4K component mixing up to a maximum of 29 colours with up to 4 spray guns.



Operator Friendly Colour Screen

Large 7" colour touch screen display enables operators to use and see the status of the machine with ease.

Low or High Pressure Mixing From 0.1:1 up to 100:1

On target mixing to the correct ratio every time, for a wide field of applications.

Suitable for Solvent and Water based Paints up to 29 Colours

Configure up to 29 different variations of colours or additional catalysts and thinners and mix up to 4 components together to create your material.

Programmable Recipes' & Flush Sequences

Configure the exact quantities for how you want your 2, 3 or 4 components mixed. Create up to 20 flushing steps, including air that can reduce your solvent waste by 65%.

Essential Reporting Data including VOC Calculation

Collect and monitor data through the standard Ethernet interface or view report information onscreen.

BINKS

Binks Magic-Flow 2 turns complicated and time consuming mixing operations into highly precise, 'select and spray' operations. It guides machine operators through daily spraying tasks using colour icons, selectable paint recipes, pre-set flush sequences and by monitoring paint tank levels.

Use Magic-Flow 2's data capturing capabilities to monitor essential information such as paint consumption, flow rates, actual mix ratios, spray times and alarm events. Collect and monitor data through the standard Ethernet interface or view report information onscreen. Ensure you remain under your VOC emissions threshold using the built-in VOC calculator.

From plastic coatings to heavy corrosion protection, from manual spray applications to automated robots, Binks Magic-Flow 2 can deliver.

Typical Applications

- Off Road and Earth Moving Vehicles
- Aerospace / Aviation
- Fork Lift, Trucks and Trailer
- General Industry
- Agricultural Machinery
- Plastic Components
- Transportation

Suitable For These Materials

- Solvent OR Waterborne Coatings
- Polyurethanes / Acrylics
- Isocyanates / Epoxies
- Acid Catalysed Materials

Model shown: 5500000

MAGIC-FLOW 2

finishingbrands.eu



Flexibility

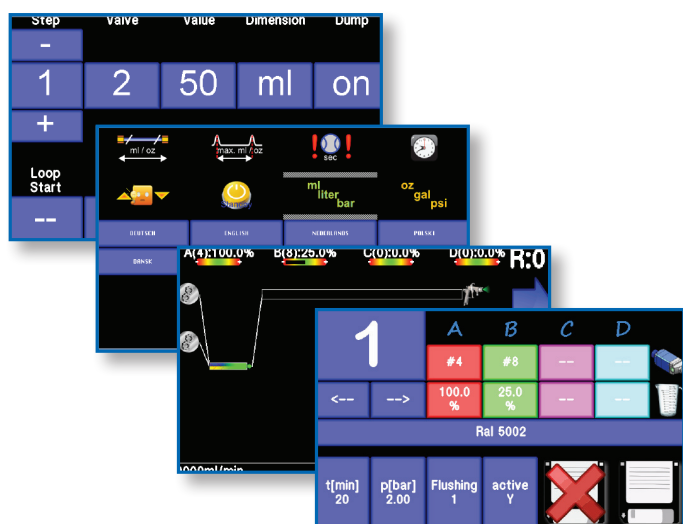
Customise Magic-Flow 2 for your solvent or water based paint application with additional modules that include multi-gun support, robot communications, control of up to 16 agitators, remote control for in-booth operation, gun flushboxes and Coriolis mass flow meters for non-contact measurement.

ATEX

Magic-Flow 2 is capable of being split into two sections. The fluid panel can be installed in a spray booth or paint kitchen (zones covered by ATEX), while the electronic controls are installed with zener barriers in a safe zone

Standard units can be converted to ATEX compatible units by adding the appropriate conversion kit at the time of ordering.

An optional remote control add-on is available to be able to operate the unit from within the spray booth.



BINKS MAGIC-FLOW 2 1-YEAR WARRANTY

Binks® warrants to the original end-use purchaser that the Binks branded products "Magic-Flow" shall not fail under normal use and service due to a defect in material or workmanship within one (1) year from the date of shipment from Binks. Does not include normal wear and tear parts.

For further technical information refer to the Binks Magic-Flow 2 Service Bulletins.

Sales and Service through our Global Network of Distributors

Finishing Brands Locations

Americas: **USA ■ Mexico ■ Brazil**
Europe/Asia/Africa: **United Kingdom ■ France ■ Germany ■ India**
Pacific Rim: **China ■ Japan ■ Australia**

Magic-Flow 2 Technical Specifications

| | |
|-----------------------------------|--|
| Optimal Working Air Pressure | 6 - 8 bar (87-116 psi) |
| Max Inlet Fluid Pressure Low/High | 40 bar (580 psi) / 250 bar (3626 psi) |
| No. of Recipes | 50 |
| Flushing Programs | 10 x 20 Steps (Actions) |
| Flow Rate | 50-2000 cc/min |
| Operating Temperature Range | 10-70°C (50-158°F) |
| Material Valves | 32 max e.g. 29 Colours, 2 Solvents, 1 Catalyst |
| Viscosity Range of Fluid | 20-100 cPs |
| Mixing Ratio Range | 0.1:1 - 100:1 |
| Mixing Accuracy | + 1% (after calibration) |
| Wetted Parts | Stainless Steel, PTFE, Polyamide |
| Options | Multi-Gun, ATEX, Coriolis Mass Flow Meters, Robot Communications, Agitator Control, Gun Flushbox, Remote Control, Printer Port, Atomising Air Switch Off |
| Measurements (H x W x D) | 1800mm x 640mm x 400mm |

Magic-Flow 2 Ordering Information

Choose the basic Binks Magic-Flow 2 system suitable for your requirements. Decide if it should support low or high fluid pressures and/or be converted to an ATEX unit. Add support for additional components (colours, catalysts, solvents) as required and build the part number that matches your production needs. See price list for additional optional extras.

| Basic Unit | 1 Gun, 1 Colour, 1 Catalyst, 2 Solvents, Ethernet, LED Stack Light |
|-------------|--|
| 5500000-L/H | Basic Unit with 2 x gear flow meters |
| 5500001-L/H | Basic Unit with 1 x coriolis meter (4mm), 1 x gear flow meter |
| 5500002-L/H | Basic Unit with 1 x coriolis meter (6mm), 1 x gear flow meter |
| 5500003-L/H | Basic Unit with 2 x coriolis meters (4mm) |
| 5500004-L/H | Basic Unit with 2 x coriolis meters (4mm + 6mm) |

550000X-L units support pressures up to 40 bar. 550000X-H units support pressures up to 250 bar.

| ATEX | Conversion Kits |
|---------|---|
| 5500030 | Convert 5500000 to ATEX compatible unit |
| 5500031 | Convert 5500001/5500002 to ATEX compatible unit |
| 5500032 | Convert 5500003/5500004 to ATEX compatible unit |

| Add-on kits | |
|-------------|---|
| 5500010 | Order for each additional component (colour, catalyst, solvent) required (up to 28) |
| 5500011 | Order if an additional catalyst is required when using an ATEX conversion kit (up to 28). For colours, order 5500010. |

Example: 5500000 -H+ 5500030 +2 x 5500010

Customer would receive a Binks Magic-Flow 2 high pressure system for 3 colours, for a one gun setup designed to be used in an ATEX zone.



BINKS®

www.finishingbrands.eu

email: marketing@carlisleft.eu

Finishing Brands®

A CARLISLE COMPANY